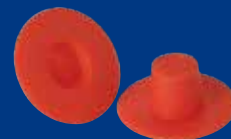
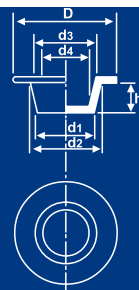


TAPPI CONICI A FLANGIA LARGA

Colore: Rosso.
Materiale: Polietilene (LDPE).



Codice	Dimensioni in mm.				Riferimenti di utilizzo su un filetto maschio	Riferimento di utilizzo su un filetto femmina	Confez. standard
	d1	d2	H	D			
T.CON.FL7.6	7.6	9.3	9.5	18.4			10'000
T.CON.FL10.7	10.7	12.3	9.5	22	1/8" GAS	1/2" UNF-1/4" GAS	10'000
T.CON.FL11.3	11.3	13.2	11	29			10'000
T.CON.FL13.5	13.5	15.5	9.5	30			5'000
T.CON.FL13.6	13.6	15.4	11.1	22.2	1/4" GAS-1/2" UNF	5/8" UNF-M16	8'000
T.CON.FL14.7	14.7	16.9	12.7	25.4		M18	6'000
T.CON.FL17.5	17.5	20	14.3	34.9	M18	1/2" GAS	3'000
T.CON.FL19.1	19.1	21.5	14.3	38.1			2'500
T.CON.FL21.9	21.9	25	17.5	48			1'500
T.CON.FL22.5	22.5	25.3	17.3	55.4			3'000
T.CON.FL24.7	24.7	27.7	19.1	38.1		M27-M30	1'500
T.CON.FL30.4	30.4	33.6	15.2	47.3	M30	1" GAS-M33-M32	1'400
T.CON.FL31.1	31.1	34.4	19.1	47.6	M33-M32-1/4" UNF	M35	1'000
T.CON.FL33.3	33.3	37.2	22.2	50.8	M35-1" GAS	1.1/8" GAS-1.1/2" UNF	800
T.CON.FL36.9	36.9	40.6	22.5	54.2	1.1/8" GAS-M38	1.1/4" GAS	800
T.CON.FL41.4	41.4	44.8	19	57.2	1.1/4" GAS-M42	M45	700
T.CON.FL47.2	47.2	51.9	24	72			400
T.CON.FL48.3	48.3	52.7	25.4	63.5	1.3/4" GAS	M52	1'200
T.CON.FL51.5	51.5	54.1	18.5	66.7			500
T.CON.FL55	55	61	25	76.7			300
T.CON.FL62	62	66.4	28	83			250