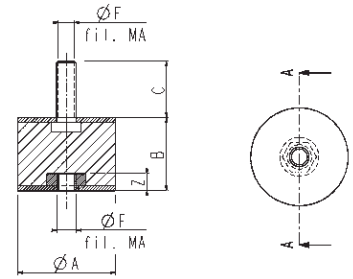
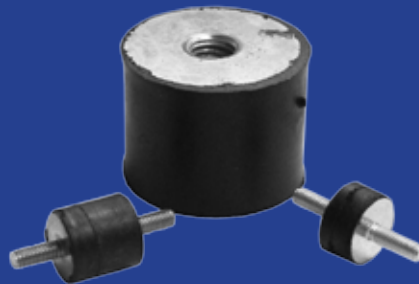
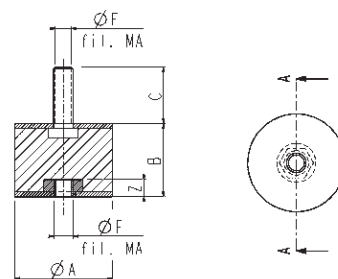
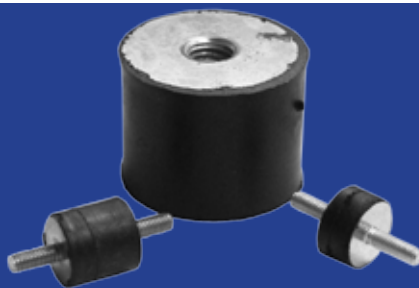


**ANTIVIBRANTI**


Codice	Ø A	altezza B	vite C	serie	filetto F	carico max (Kg)	carico per flessione (Kg)
AT0607	6	7	5	MM	M3	1,5	0,3
AT0911	9	11	10	MM	M4	3	0,5
AT1015	10	15	10	MM/MF/FF	M5	15	2
AT1508	15	8	10	MM	M4	18	3
AT1515	15	15	10	MM/MF/FF	M4	20	4
AT1515	15	15	10	MM/MF/FF	M5	20	4
AT1520	15	20	10	MM/M/FF	M5	25	5
AT1808	18	8	12	MM	M6	25	5
AT2010	20	10	12	MM/MF	M6	45	5
AT2015	20	15	12	MM	M5	40	5
AT2015	20	15	14	MM/MF/FF	M	50	5
AT2020	20	20	14	MM/MF/FF	M6	55	5
AT2025	20	25	14	MM/MF/FF	M5	30	4
AT2025	20	25	14	MM/MF/FF	M6	30	4
AT2030	20	30	14	MM/MF/FF	M6	30	4
AT2515	25	15	14	MM/MF/FF	M6	50	6
AT2520	25	20	16	MM/MF/FF	M6	60	6
AT2520	25	20	18	MM/MF/FF	M8	60	6
AT2525	25	25	18	MM/MF/FF	M6	40	4
AT2530	25	30	18	MM/MF/FF	M6	45	4
AT3015	30	15	18	MM/MF	M8	60	6
AT3020	30	20	24	MM/MF/FF	M8	80	8
AT3025	30	25	23	MM/MF/FF	M8	80	8
AT3030	30	30	18	MM/MF/FF	M6	80	8
AT3030	30	30	23	MM/MF/FF	M8	80	8
AT3040	30	40	23	MM/MF/FF	M8	70	7
AT4020	40	20	23	MM/MF/FF	M8	100	14
AT4030	40	30	23	MM/MF/FF	M8	120	16
AT4030	40	30	23	MM/MF/FF	M10	120	16
AT4035	40	35	23	MM/MF/FF	M8	130	17
AT4035	40	35	23	MF	M10	140	18
AT4040	40	40	23	MM/MF/FF	M8	140	18
AT5020	50	20	23	MM/MF/FF	M10	150	18
AT5030	50	30	23	MM/MF/FF	M10	160	20

**ANTIVIBRANTI**


Codice	Ø A	altezza B	vite C	serie	filetto F	carico max (Kg)	carico per flessione (Kg)
AT5040	50	40	23	MM/MF/FF	M10	170	18
AT5045	50	45	23	MM/MF/FF	M10	160	17
AT5050	50	50	23	MM/MF/FF	M10	150	14
AT6030	60	30	32	MM/MF/FF	M12	250	40
AT6035	60	35	32	MM/MF/FF	M12	250	35
AT6040	60	40	32	MM/MF/FF	M12	240	35
A6045T	60	45	32	MM/MF/FF	M12	230	30
AT6050	60	50	32	MM/MF/FF	M12	230	25
AT6055	60	55	32	MM/MF/FF	M12	200	25
AT6060	60	60	32	MM/MF/FF	M12	200	20
AT7525	75	25	47	MM/MF/FF	M12	500	90
AT7530	75	30	47	MM/MF/FF	M12	500	80
AT7535	75	35	47	MM/MF/FF	M12	480	70
AT7540	75	40	47	MM/MF/FF	M12	480	60
AT7550	75	50	47	MM/MF/FF	M12	480	55
AT7555	75	55	47	MM/MF/FF	M12	450	45
AT7560	75	60	47	MM/MF/FF	M12	450	35
AT10040	100	40	47	MM/MF/FF	M16	900	110
AT10050	100	50	47	MM/MF/FF	M16	850	100
AT10055	100	55	47	MM/MF/FF	M16	850	100
AT10060	100	60	47	MM/MF/FF	M16	800	90