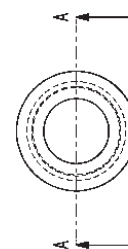
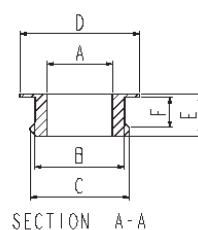
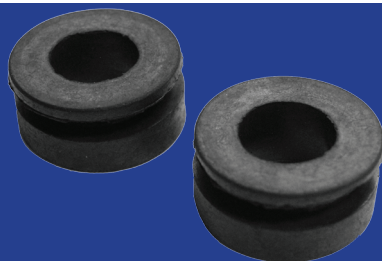


PASSACAVI TIPO WS


Codice	Ø foro/hole A (mm)	taglio lamiera metal hole B (mm)	Ø C (mm)	Ø D (mm)	spessore/ thickness E (mm)	spessore lamiera metal thickness F (mm)
P WS4	5,0	10,0	11,0	16,0	12,5	6,0
P WS6	7,0	12,0	13,0	18,0	12,5	6,0
P WS7,5	7,5	9,0	13,0	15,0	6,5	1,0
P WS8	9,0	14,0	15,0	20,0	12,5	6,0
P WS10	11,0	16,0	17,0	22,0	12,5	6,0
P WS12	13,0	18,0	18,5	25,0	12,5	6,0
P WS13	13,0	19,0	22,0	25,0	8,0	2,0
P WS13,5	13,5	16,5	20,0	25,0	12,0	3,5
P WS14	15,0	25,0	25,5	33,0	14,0	6,0
P WS16,1	16,0	18,5	22,0	29,0	8,0	2,0
P WS16	16,5	24,7	25,0	32,5	14,0	6,0
P 26X43	26,0	43,0	50,0	57,0	14,0	4,0
P 27X43	26,0	43,5	50,0	58,0	16,0	6,0
P 27,5X31	27,5	31,0	34,0	41,0	13,0	4,0
P WS32	32,0	60,0	66,0	79,0	14,0	4,0
P WS43	43,0	59,0	65,5	79,0	14,5	4,5