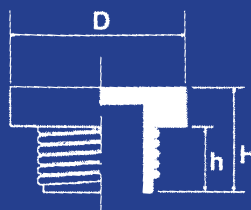
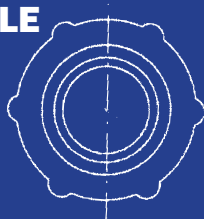


TAPPO FILETTATO UNIVERSALE

Colore: Rosso
Materiale: Polietilene (LDPE).



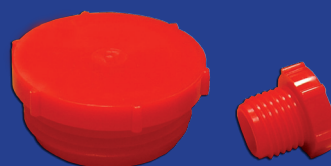
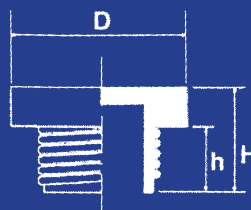
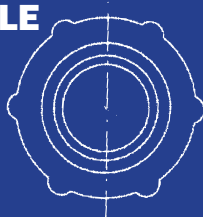
Codice	Filettatura GAS/BSP	Dimensioni in mm.			Confez. standard
		H	D	h	
UTF1/8"	1/8" x 28	10.5	16.4	4.2	5'000
UTF1/4"	1/4" x 19	12.8	18.8	6.5	5'000
UTF3/8"	3/8" x 19	12	22.9	5.5	5'000
UTF1/2"	1/2" x 14	17.3	28	10.3	3'000
UTF5/8"	5/8" x 14	18.4	31.3	13.9	2'500
UTF3/4"	3/4" x 14	17	32.3	11	2'000
UTF7/8"	7/8" x 14	18.1	38	13.5	1'500
UTF1"	1" x 11	16.9	39.8	10.8	1'500
UTF1.1/4"	1.1/4" x 11	20.9	49.9	15	800
UTF1.1/2"	1.1/2" x 11	16.9	55.2	10.8	600
UTF2"	2" x 11	17.5	73.7	10.7	400
UTF3"	3" x 11	16.5	10.5	11.3	150

Codice	Filettatura METRICA	Dimensioni in mm.			Confez. standard
		H	D	h	
UTF8x1	M8 x 1	14.3	12.3	9.5	5'000
UTF10x1	M10 x 1	14.6	15.3	10.4	5'000
UTF12x1	M12 x 1	16.7	18.5	10.7	5'000
UTF12x1.5	M12 x 1.5	16.3	16.7	8.7	5'000
UTF14x1.5	M14 x 1.5	17.2	18.5	9.5	5'000
UTF16x1.5	M16 x 1.5	17.2	22	12.5	5'000
UTF18x1.5	M18 x 1.5	18.3	24.4	13.7	4'000
UTF20x1.5	M20 x 1.5	18.2	26.3	14	4'000
UTF22x1.5	M22 x 1.5	18.3	28.2	13.7	3'000
UTF24x1.5	M24 x 1.5	18.5	31.3	13.8	3'000
UTF25x1.5	M25 x 1.5	18.5	31.3	14	2'000
UTF26x1.5	M26 x 1.5	18.7	32.7	13.8	2'000
UTF52x2	M52 x 2	21.5	63.7	15.5	500

TAPPO FILETTATO UNIVERSALE

Colore: Rosso

Materiale: Polietilene (LDPE).



Codice	Filettatura UNF/JIC	Dimensioni in mm.			Confez. standard
		H	D	h	
UTF5/16"U	5/16" x 18	12	14.5	7.4	5'000
UTF5/16"BU	5/16" x 24	12.3	14.8	7.4	5'000
UTF3/8"U	3/8" x 24	14	13.7	9.5	5'000
UTF7/16"U	7/16" x 20	16.1	17.4	11	5'000
UTF7/16"BU	7/16" x 24	12.1	17.8	7.1	5'000
UTF1/2"U	1/2" x 20	15.3	18.5	10.5	5'000
UTF9/16"U	9/16" x 18	15.4	22.6	10.7	5'000
UTF9/16"BU	9/16" x 24	13.6	18.9	9	5'000
UTF5/8"U	5/8" x 18	14.8	21	10	5'000
UTF5/8"BU	5/8" x 24	14.8	20.7	10	5'000
UTF11/16"U	11/16" x 16	18.1	25.6	13.5	3'000
UTF3/4"U	3/4" x 16	18.7	27	13.8	3'000
UTF13/16"U	13/16" x 16	18.1	26.7	13.5	2'500
UTF7/8"U	7/8" x 14	18.5	28.8	13.6	2'500
UTF1"U	1" x 14	17.8	32	13.2	2'000
UTF1.1/16"U	1.1/16"x12	18.4	33.4	13.8	2'000
UTF1.1/16"BU	1.1/16"X14	18.3	33.3	13.7	2'000
UTF1.3/16"U	1.3/16"x12	18.3	36.8	13.5	1'500
UTF1.5/16"U	1.5/16"x12	16.3	39.3	11	1'500
UTF1.5/8"U	1.5/8" x 12	17.3	50.6	12.9	800
UTF1.3/4"U	1.3/4" x 12	19.7	53.2	13.8	500
UTF1.7/8"U	1.7/8" x 12	22.5	58.4	16.7	400
UTF2.1/2"U	2.1/2" x 12	20.6	73.6	15	300