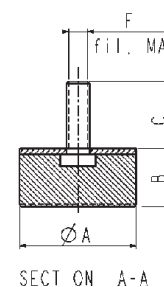
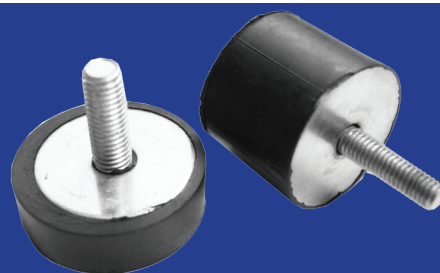


PIEDINI PARACOLPI CILINDRICI


Codice	Ø A (mm)	altezza B (mm)	vite C (mm)	filetto F (mm)	carico (Kg)
PIE 25/7	25	7	23	8MA maschio	60
PIE 25/18RM6	25	18	23	6MA maschio	70
PIE 37/35RM8	37	35	23	8MA maschio	80
PIE 40/15RM10	40	15	23	10MA maschio	110
PIE 40/15RM8X22	40	15	22	8MA maschio	110
PIE 40/25RM8	40	25	23	8MA maschio	90
PIE 40/25RF8	40	30		8MA femmina	120
PIE 40/30RM8	40	30	23	8MA maschio	120
PIE 40/30RM10	40	30	23	10MA maschio	120
PIE 40/40RF8	40	40		8MA femmina	130
PIE 40/40RF10	40	40		10MA femmina	130
PIE 40/40RM8	40	40	23	8MA maschio	130
PIE 40/40RM10	40	40	23	10MA maschio	130
PIE 48X14RM10	48	14	27	10MA maschio	140
PIE 50/20RM10	50	20	48	10MA maschio	160
PIE 110/30RM14	110	30	70	14MA maschio	200