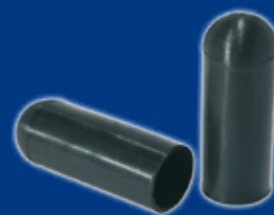
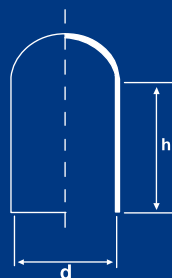


## CAPPUCCI IN EPDM

Colore: Nero

Materiale: EPDM.

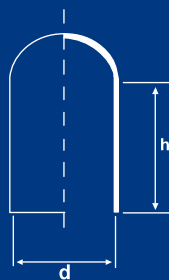
Resistenza al calore fino a +177°C.



Codice	Dimensioni in mm.		Riferimenti di utilizzo			Confez. standard
	d	h	GAS	UNF	METRICO	
CPD0.5	0.5	12.7	-	-	-	1'000
CPD1.6	1.6	19.1	-	1/16"	-	1'000
CPD1.8	1.8	25.4	-	1/16"	-	1'000
CPD2.4	2.4	19.1	-	-	-	1'000
CPD2.4/1	2.4	25.4	-	-	-	1'000
CPD2.5	2.5	12.7	-	-	-	1'000
CPD2.5/1	2.5	25.4	-	-	-	1'000
CPD2.8	2.8	19.1	-	-	M3	1'000
CPD2.8/1	2.8	25.4	-	-	M3	1'000
CPD3.2	3.2	12.7	-	-	-	1'000
CPD3.2/1	3.2	25.4	-	-	-	1'000
CPD3.5	3.5	12.7	-	-	-	500
CPD3.5/1	3.5	25.4	-	-	-	1'000
CPD3.8	3.8	19.1	-	-	M4	500
CPD3.8/1	3.8	25.4	-	-	M4	250
CPD4	4	12.7	-	-	M4	250
CPD4/1	4	25.4	-	-	M4	1'000
CPD4/2	4	38.1	-	-	M4	250
CPD4.4	4.4	12.7	-	3/16"	-	250
CPD4.4/1	4.4	25.4	-	3/16"	-	1'000
CPD4.4/2	4.4	38.1	-	3/16"	-	250
CPD4.6	4.6	25.4	-	3/16"	-	250
CPD4.8	4.8	12.7	-	-	M5	250
CPD4.8/1	4.8	25.4	-	-	M5	1'000
CPD5.5	5.5	25.4	-	-	-	250
CPD5.7	5.7	12.7	-	-	M6	250
CPD5.7/1	5.7	25.4	-	-	M6	250
CPD5.7/2	5.7	38.1	-	-	M6	250
CPD5.9	5.9	12.7	-	1/4"	M6	250
CPD5.9/1	5.9	25.4	-	1/4"	M6	1'000
CPD5.9/2	5.9	38.1	-	1/4"	M6	250

**CAPPUCCI IN EPDM**

**Colore: Nero**  
**Materiale: EPDM.**  
**Resistenza al calore fino a +177° C.**



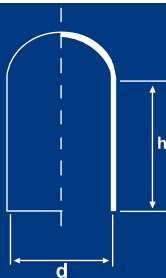
Codice	Dimensioni in mm.		Riferimenti di utilizzo			Confez. standard
	d	h	GAS	UNF	METRICO	
CPD6.4	6.4	25.4	-	-	-	1'000
CPD6.4/1	6.4	38.1	-	-	-	250
CPD7.1	7.1	12.7	-	5/16"	-	250
CPD7.1/1	7.1	25.4	-	5/16"	-	1'000
CPD7.5	7.5	38.1	1/16"	5/16"	M8	250
CPD7.9	7.9	25.4	-	-	M8	1'000
CPD7.9/1	7.9	38.1	-	-	M8	250
CPD8.7	8.7	25.4	-	-	-	250
CPD9	9	38.1	-	-	-	250
CPD9.5	9.5	12.7	1/8"	-	M10	250
CPD9.5/1	9.5	19.1	1/8"	-	M10	250
CPD9.5/2	9.5	25.4	1/8"	-	M10	1'000
CPD9.5/3	9.5	38.1	1/8"	-	M10	250
CPD10.3	10.3	25.4	-	-	-	250
CPD11.1	11.1	25.4	-	7/16"	-	200
CPD11.6	11.6	25.4	-	-	-	100
CPD11.6/1	11.6	38.1	-	-	M12	100
CPD11.9	11.9	25.4	-	1/2"	M12	200
CPD12.2	12.2	38.1	-	1/2"	-	100
CPD12.7	12.7	38.1	1/4"	1/2"	-	200
CPD12.7/1	12.7	76.2	1/4"	1/2"	-	100
CPD12.7/2	12.7	101.6	1/4"	1/2"	-	100
CPD13.6	13.6	38.1	-	-	M14	500
CPD13.6/1	13.6	76.2	-	-	M14	100
CPD14.3	14.3	16.7	-	-	M15	100
CPD14.3/1	14.3	27.9	-	-	M15	100
CPD14.3/2	14.3	38.1	-	-	M15	200
CPD15.2	15.2	38.1	-	-	-	100
CPD15.9	15.9	31.8	3/8"	5/8"	M17	100
CPD15.9/1	15.9	38.1	3/8"	5/8"	M17	200
CPD15.9/2	15.9	57.2	3/8"	5/8"	M17	100
CPD17.5	17.5	15.9	-	-	-	100

## CAPPUCCI IN EPDM

Colore: Nero

Materiale: EPDM.

Resistenza al calore fino a +177°C.



Codice	Dimensioni in mm.		Riferimenti di utilizzo			Confez. standard
	d	h	GAS	UNF	METRICO	
CPD17.5/1	17.5	38.1	-	-	-	100
CPD17.5/2	17.5	44.5	-	-	-	100
CPD17.5/3	17.5	63.5	-	-	-	100
CPD18.5	18.5	38.1	-	-	-	100
CPD18.5/1	18.5	110	-	-	-	100
CPD19.1	19.1	38.1	-	3/4"	M20	200
CPD19.1/1	19.1	48.9	-	3/4"	M20	100
CPD19.1/2	19.1	88.9	-	3/4"	M20	100
CPD19.1/3	19.1	109.2	-	3/4"	M20	100
CPD20.6	20.6	25.4	1/2"	7/8"	M22	100
CPD20.6/1	20.6	38.1	1/2"	7/8"	M22	100
CPD21.5	21.5	72.2	-	7/8"	M22	100
CPD22.2	22.2	38.1	-	-	-	100
CPD23.8	23.8	38.1	-	-	M24	100
CPD24.6	24.6	38.1	-	-	-	100
CPD24.6/1	24.6	101.6	-	-	-	100
CPD25.4	25.4	20.8	-	1"	M27	100
CPD25.4/1	25.4	38.1	-	1"	M27	100
CPD25.4/2	25.4	50.8	-	1"	M27	100
CPD27.5	27.5	76.2	-	-	-	100
CPD28.6	28.6	38.1	-	-	M30	100
CPD30.1	30.1	59	-	-	-	100
CPD31.8	31.8	38.1	1"	1.1/4"	M33	100
CPD38.1	38.1	25.4	-	1.1/2"	M39	100
CPD38.1/1	38.1	38.1	-	1.1/2"	M39	100
CPD38.1/2	38.1	44.5	-	1.1/2"	M39	100
CPD41.3	41.3	50.8	1.1/4"	-	-	50
CPD44.5	44.5	38.1	-	1.3/4"	-	50
CPD44.5/1	44.5	50.8	-	1.3/4"	-	50
CPD47.6	47.6	50.8	1.1/2"	-	-	50
CPD50.8	50.8	50.8	-	-	-	50
CPD53.8	53.8	50.8	-	-	-	50